

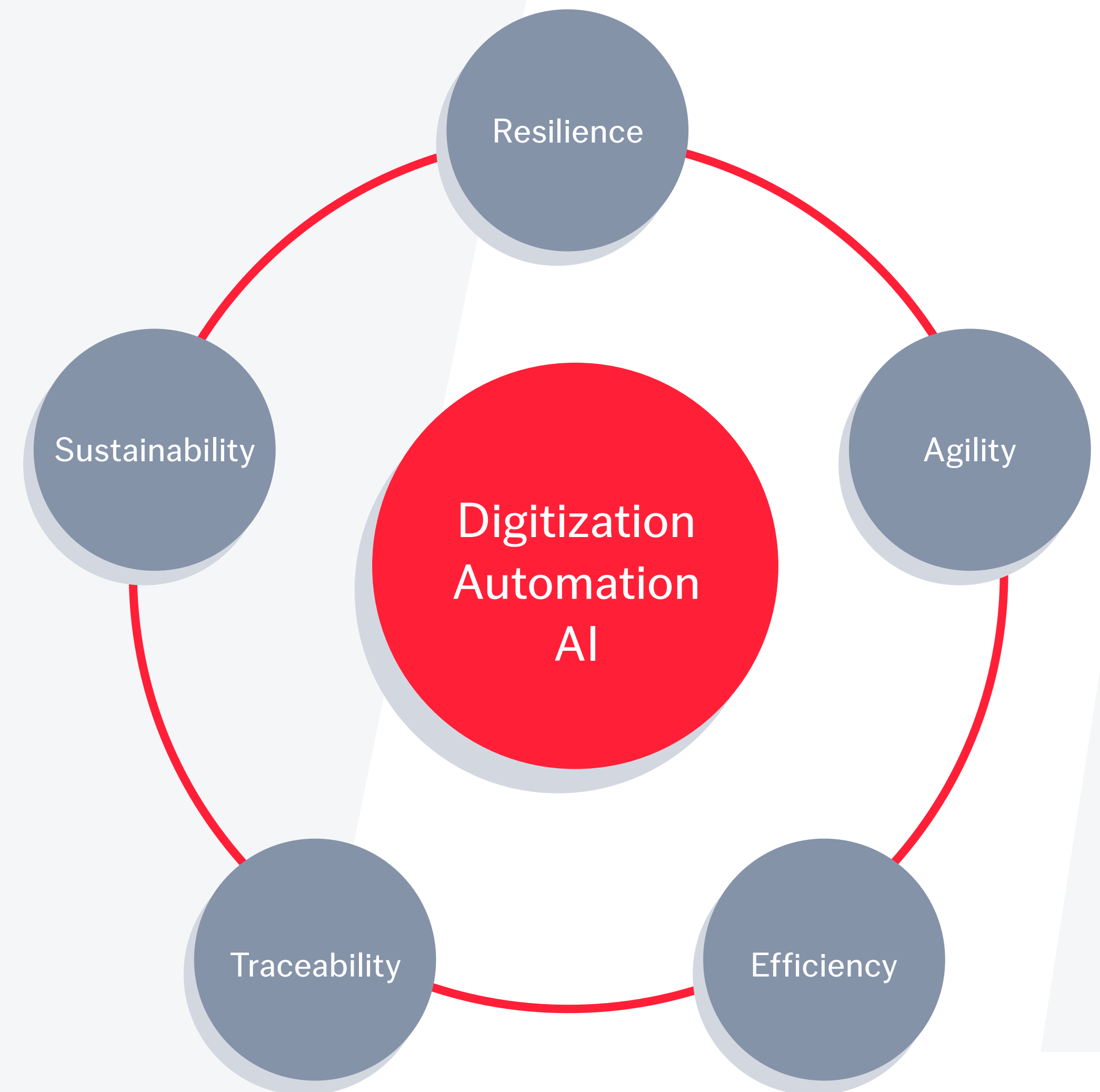
ABBYY

TRANSPORTATION & LOGISTICS

Keep Shipments
Moving with Intelligent
Automation



Reoccurring disruptions, economic and inflationary pressure, changing demand, and geopolitical uncertainty have affected the transportation and logistics industry like no other. The turbulent last few years have left all players with a sense of urgency to future-proof their operations in five important ways, with automation, digitization, and artificial intelligence (AI) being key enablers.



The problem with digitization and automation in transportation and logistics

Although autonomous driverless trucks, drone delivery, exoskeletons, and artificial intelligence (AI) are exciting players in the automation journey within transportation and logistics, there remain a few fundamental steps toward digital transformation in the industry that first must be addressed:

- Shipping processes are heavily reliant on a large set of complex documents, which are often shared with multiple parties in hard copy format.
- Despite decades of attempts to standardize the format and electronic exchange of key documents such as bill of lading, there is still only moderate success, due to the complexity and number of parties involved.
- A key challenge in achieving operational excellence in transportation and logistics remains disparate legacy systems, which hinder achieving end-to-end transparency of processes.



“ While a cross-border transaction involves multiple actors and requires the exchange of **36 documents and 240 copies** on average, fewer than 1% of trade documents are fully digitized.



Source: International Chamber of Commerce and World Trade Organization



Rapidly advance your automation journey with intelligent document processing

ABBYY

Transportation and 3PL providers are tackling these key roadblocks to modern digital transformation with AI-based, low-code intelligent document processing (IDP). IDP automates the classification, extraction and processing of data from documents, making shipping processes run more efficiently, accurately, and with greater visibility.

ABBYY's IDP platform, Vantage, offers pre-trained and ready-to-go document extraction models, called document skills, for shipping documents. You can kick-start your automation in a couple of hours and constantly improve quality thanks to powerful machine learning.

ABBYY Vantage

- Powered by AI
- Low-code / No-code
- Pluggable
- Pre-trained
- Adapt on the fly
- Fast
- Accurate



5 WAYS TO FUTURE-PROOF YOUR OPERATIONS WITH INTELLIGENT AUTOMATION



ABBYY

1 **Resilience:** Tap into the power of your documents and data

The events of recent years have proven that it is crucial for supply chain participants to employ modern technologies such as AI, machine learning, and predictive analytics for more resilience. But to do so, they need better access and insights into data currently trapped in paper documents or disparate, outdated systems.

Use intelligent automation to:

- Build an interactive digital twin of processes, analyze them in real time, and monitor compliance.
- Automatically capture data from trade documentation of any complexity and ingest it into business systems for further processing and analysis.
- Validate extracted data against pre-defined business rules or across documents.

1.8 million

documents processed annually

— **Rhenus Assets & Services GmbH & Co. KG**



2 **Agility:** Adapt easily to handle the impact of changing regulations

How quickly can your transportation and logistics operations adapt to meet fast-changing demands and forces beyond your control?

Regulatory change such as US interstate tax codes, Brexit, trade policies, and tariffs means new forms and procedures. Unexpected regional or worldwide events drive demand up (or down) and present logistical changes. Competitive disruption can come from new sources (big tech but also from old competitors adopting new technologies like drone delivery and autonomous trucks).

Use intelligent automation to:

- Modernize and connect systems and processes without disrupting IT infrastructure.
- Remove friction from processes and remain competitive by increasing your control and visibility of information contained within the many varied types of documents that drive operations.
- Adapt to changing regulations and requirements quickly with low-code / no-code intelligent document processing, where the citizen developer is enabled to control the process.
- Pass data from important, time-critical documentation onto business systems using API or pre-built connectors.

3 **Efficiency:** Gain time and improve accuracy with better document processing

In the fast-paced world of logistics, every minute counts. If information isn't right or can't be verified at any point in the shipping process, costly delays occur including service level agreement (SLA) failures, additional fines, demurrage charges, and excess labor and fuel costs. Customers and stakeholders rely on real-time transparency on the whereabouts of their shipments for planning of resources and production.

Use intelligent automation to:

- Capture documents with a mobile device any time, any place, and let the IDP system identify document type, language, and what needs to be extracted.
- Extract and verify the necessary information against business rules or across documents.
- Reduce errors, costs, and accelerate turnaround times by automating the handling of the entire document set of a shipment.

70% efficiency gain

from standardization of global processes with ABBYY intelligent document processing

— **Deutsche Post DHL Group**



4 Traceability: Boost your retention rate

When hours can cost tens of thousands of dollars to a shipper or customer, any delay can be disastrous. Today's digitally savvy customers want to answer their own questions about where their goods are in the process—right from their cell phones. Improving visibility into and control over document content doesn't just bring you operational benefits, it makes you more competitive.

Use intelligent automation to:

- Turn in-cab, hand-held, depot, and other devices into real-time validation and clearance to keep shipments moving.
- Meet the expectations of your customers for complete traceability and visibility of their shipments' status.
- Improve the accuracy and currentness of the information in your shipping processes and thereby increase the confidence of your commercial customers that their shipments will arrive on time.

60% reduction

in supplier query response,
down from one week to two days

— **Leading global digital infrastructure provider**



5 **Sustainability:** Reduce CO₂ footprint with optimized, efficient processes

Today's intelligent technology can also help you understand how your processes around bills of lading, customs, and receipts/payments tracking are working so you can eliminate friction in those processes from delayed processing, validation errors, incomplete forms, mismatched manifests/waybills, and human intervention to correct errors. Knowing where time is being wasted handling exceptions, processing incorrect forms, or waiting at the dock lets you apply improvements where they matter most.

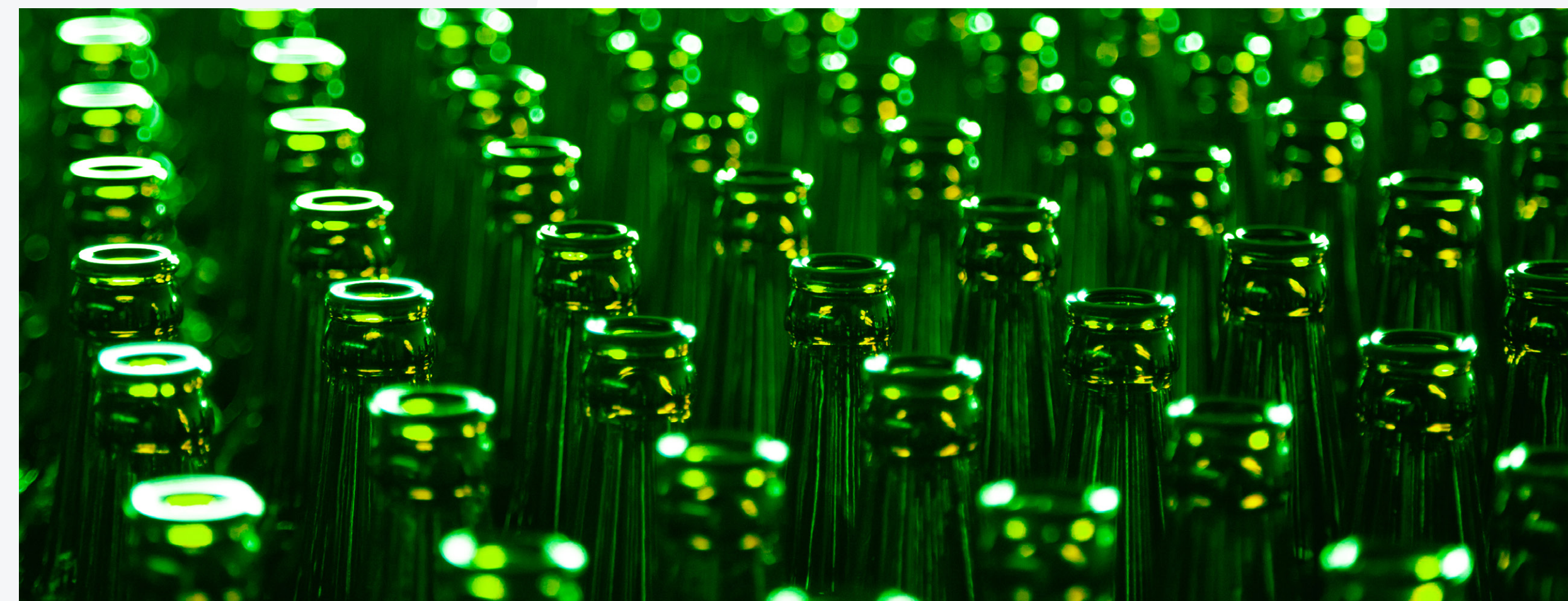
Use intelligent automation to:

- Monitor shipment processes throughout the entire route from shipper to consignee.
- Set up alerts and receive notifications when issues arise with documents or events that delay shipments so you can immediately act to resolve them.
- Analyze and optimize your processes to reduce waste of fuel, time, and goods.

140+ hours saved per month

92% touchless order processing

— **Carlsberg Group**



ENSURING MORE COMPLETE,
ACCURATE, AND READILY
AVAILABLE INFORMATION
IS SOMETHING YOU CAN
CONTROL.



ABBYY

Get information right, every time, with intelligent document processing

ABBYY

Clearances depend entirely on information contained within bills of lading, commercial invoices, waybills, customs forms, etc.

Any mistake or unverifiable detail can stop a shipment or pose liabilities. Innovative intelligent document processing solutions leverage artificial intelligence and machine learning technologies through mobile experience to help get information right at all points in shipping processes automatically.

- 1 Capture and process content at the highest level of quality despite unfavorable field conditions, adding information that provides context.
- 2 Extract business-ready data from any document type (e.g., specifics on goods, tariffs, addresses, etc.).
- 3 Validate content across the entire documentation, against existing databases, and business rules, and flag anything missing or incorrect, passing highly accurate information on to customs systems.

These capabilities help prevent errors from getting into your shipping processes.

But when something does go wrong, how do you identify where and why so you can remediate the problem?



ABBYY

Process intelligence

With the help of advanced process mining and task mining technology using the latest artificial intelligence, ABBYY Timeline enables 3PL providers to automatically build an interactive digital twin of their processes, analyze them in real time to identify bottlenecks, trigger alerts when deviations or delays are detected, and predict future outcomes to facilitate decision-making.

ABBYY Timeline

- End-to-end process visualization
- Process simulation
- Pre-built, best-practice tools
- Accurate, unbiased data
- Quick to start, easy to scale



ABBYY is a
recognized market leader

ABBYY

#1

IDP provider
globally

10

Analyst firms name
ABBYY a Leader in IDP

6

Analyst firms name ABBYY
a Leader in Process Mining

Gartner

FORRESTER

IDC

Everest Group

NelsonHall
TRANSFORM THROUGH INSIGHT

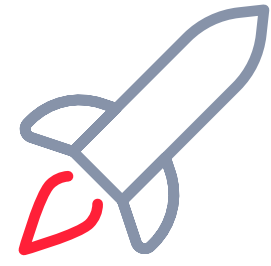
The New York Times

***ISG**

Forbes

The Washington Post

FORTUNE



INCREASE YOUR OPERATIONAL EFFICIENCY



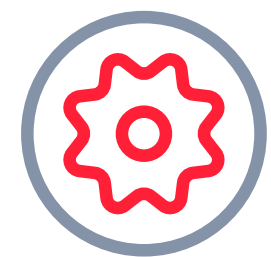
GAIN MORE CONTROL AND VISIBILITY
OVER SHIPPING DOCUMENTATION



IMPROVE THE BOTTOM LINE



RESPOND WITH AGILITY TO GLOBAL
CHANGE



HONE YOUR COMPETITIVE STRENGTH

Move cargo faster
with the power of your data.

Learn more by visiting
ABBYY.COM

© ABBYY 2023. ABBYY is a registered trademark or a trademark of ABBYY Development Inc. and/or its affiliates. This designation can also be logo, product, or company name (or part of any of the above) of ABBYY Development Inc. and/or its affiliates and may not be used without consent of their respective owners. All other product names and trademarks mentioned herein are the property of their respective owners.. DS-285

ABBYY